



Echo Central One, Leeds, LS9 8FG, £1,050 PCM

A well presented two bedroom furnished apartment with parking located just a short walk from City Centre amenities. The apartment comprises: entrance hallway, Open plan living area with fully equipped gloss Kitchen, floor to ceiling windows and access to walk on balcony, Two double bedrooms, the master having en suite shower room. Second double bedroom, House Bathroom with bath and shower. One secure parking space. Deposit £1210. EPC Rating C. Council tax band C.



2

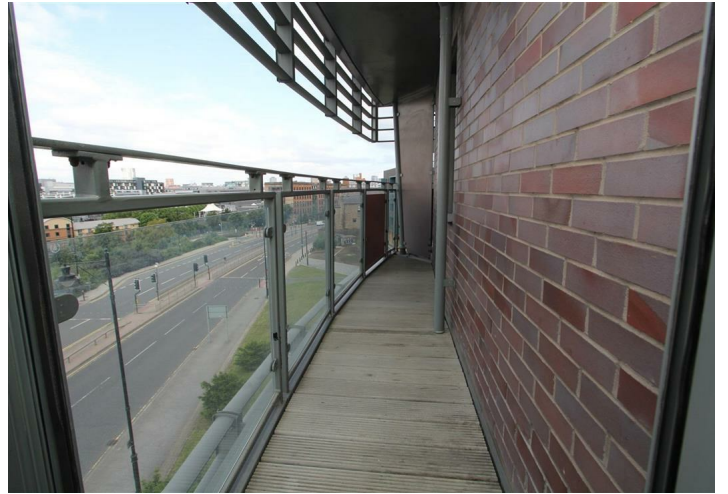


2



C

Echo Central One, Leeds, LS9 8FG



- **Furnished**
- **2 bedrooms**
- **Balcony**
- **Secure parking**
- **2 bathrooms**

| Energy Efficiency Rating | | |
|---|-------------------------|-----------|
| | Current | Potential |
| Very energy efficient - lower running costs | | |
| (92 plus) A | | |
| (81-91) B | | |
| (69-80) C | | |
| (55-68) D | | |
| (39-54) E | | |
| (21-38) F | | |
| (1-20) G | | |
| Not energy efficient - higher running costs | | |
| | 75 | 85 |
| England & Wales | EU Directive 2002/91/EC | |

| Environmental Impact (CO ₂) Rating | | |
|---|-------------------------|-----------|
| | Current | Potential |
| Very environmentally friendly - lower CO ₂ emissions | | |
| (92 plus) A | | |
| (81-91) B | | |
| (69-80) C | | |
| (55-68) D | | |
| (39-54) E | | |
| (21-38) F | | |
| (1-20) G | | |
| Not environmentally friendly - higher CO ₂ emissions | | |
| | | |
| England & Wales | EU Directive 2002/91/EC | |

